

The BMW 5 Series
Gran Turismo

www.bmw.co.uk
www.bmw.ie



The Ultimate
Driving Machine




THE BMW 5 SERIES GRAN TURISMO.

UNPARALLELED JOY.

BMW EfficientDynamics
Less emissions. More driving pleasure.



Official partner of the
Olympic and Paralympic Games

A high-angle, wide shot of the front interior of a car. The view is from the passenger side looking towards the driver's seat. Two light-colored, textured leather seats with visible stitching are prominent. A large panoramic sunroof covers the top of the cabin, letting in bright light. The dashboard and steering wheel are partially visible on the right side. The overall atmosphere is clean, modern, and bright.

**WHEN WAS THE LAST TIME YOU
EXPERIENCED SOMETHING FOR
THE FIRST TIME?**

Contents

The BMW 5 Series Gran Turismo

- 04 | 09 Exterior
- 10 | 17 Interior
- 18 | 25 The first of its kind
- 26 | 31 Versatility

Technology

- 32 | 35 BMW EfficientDynamics
- 36 | 37 Engines
- 38 | 39 Chassis
- 40 | 43 BMW ConnectedDrive

Equipment

- 44 | 47 Colours
- 48 | 49 Combination examples
- 50 | 56 Standard | Optional equipment
 - 57 Genuine BMW Accessories
- 58 | 61 Standard equipment
- 62 | 63 Technical data
- 64 | 65 London 2012 Olympic and Paralympic Games
- 66 | 67 BMW Service | BMW Financial Services



Fully adjustable and folding rear seats provide comfortable first class seating.



Dual tailgate for flexible loading.

BMW 530d SE	Equipment of model shown:	
	Engine:	Six-cylinder in-line diesel
	Max. output:	245hp (180kW)
	Wheels:	20" light alloy
		Double-spoke style 316
	Exterior colour:	Neptune Blue, metallic
	Upholstery:	Ivory White/Black Dakota leather
	Interior trim:	Fineline natural finish wood, unlacquered
For information on fuel consumption and CO ₂ emissions please refer to pages 62 63.		



THE BMW 5 SERIES GRAN TURISMO.
THE FIRST OF ITS KIND.



CHALLENGING CONVENTIONS. TYPICAL FOR BMW.

At BMW, conventional boundaries are continually challenged. It is a progressive mindset that drives innovation, with often groundbreaking results. Like nothing before it, the BMW 5 Series Gran Turismo unites the strengths of existing vehicles for which BMW is already world renowned. Combining the elegance and prestige of a luxury Saloon, the practicality of an Estate vehicle and versatility and spaciousness of a modern SAV, the Gran Turismo is the best of all worlds combined into one strikingly elegant and compellingly stylish BMW.



reddot design award
honourable mention 2010



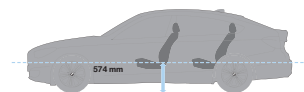
The BMW 5 Series Gran Turismo may be like nothing before, but it exudes a sense of instant familiarity. The resolutely focused front profile features the prominent and distinctive BMW kidney grille. Elegant frameless doors, a BMW first on a five-door car, offer a welcoming invitation inside. The sweeping, Coupé-like roofline cleverly disguises the interior proportions and versatility. The strong shoulderline merges seamlessly into the rear, emphasising its powerful presence. Whatever your perspective, the Gran Turismo delivers dynamic authenticity and a truly captivating design.

**WHEN WAS THE LAST TIME YOU ENTERED A ROOM
FOR THE FIRST TIME AND FELT INSTANTLY AT HOME?**





A WELCOMING INVITATION.



The raised seating position makes for easy entry and exit. Exceptional all-round visibility inspires confidence and a feeling of security at the wheel.

The luxurious interior ambience of the BMW 5 Series Gran Turismo is emphasised by exquisitely crafted wood trims, high-quality leather and an abundance of natural light, thanks to the standard panoramic glass sunroof. Expertly engineered, intuitively placed controls and intricate details such as the seductive black panel technology, all combine to create an air of cutting-edge sophistication.





SECOND ROW. FIRST CLASS TRAVEL.

The BMW 5 Series Gran Turismo is offered with two seating arrangements: the SE model with a five-seat configuration and the Executive model with a four-seat configuration. Both models offer exceptional rear head and legroom – comparable to a BMW X5 and a BMW 7 Series respectively – flexible luggage compartment arrangements and fully-folding, adjustable rear seats. Two individual comfort seats define the rear seating configuration of the Executive model, featuring seat heating and electric seat adjustment as standard in all seats. Dakota leather is standard on all SE and Executive models and the standard automatic air conditioning with four-zone control allows each passenger to individually personalise the climate in their area. As for entertainment, the Gran Turismo again excels with the optional BMW Professional rear seat entertainment system featuring 9.2" high-resolution screens integrated into the front seat backrests.

Image (left) shows Executive model featuring two independent rear comfort seats with full electric seat adjustment including folding function. Images (right) show SE model with five-seat configuration.



At the maximum comfort setting, rear passengers enjoy generous leg room comparable to a BMW 7 Series. The luggage volume is 440 litres. A separate partition wall behind the seats insulates passengers thermally and acoustically from the luggage compartment.



To increase luggage compartment volume, the independent partition wall can be unlocked and adjusted in line with the backrest position of the rear seats. The seats can be moved forward up to a maximum of 100mm, which increases the luggage compartment volume to 590 litres.



A maximum luggage compartment volume of 1,700 litres is achieved when the seats are entirely folded down.



For total flexibility and to suit all personal requirements, the luggage compartment partition wall, seat backrests and seat base positions can all be adjusted independently. Backrests can be reclined up to 40 degrees.

**DO YOU STILL REMEMBER THE ANTICIPATION OF
YOUR VERY FIRST FLIGHT?**



MAKE EVERY DRIVE SUIT EVERY SITUATION.

Combining driving dynamics, superior comfort and efficiency at the highest level demands exceptional innovative vision. Such vision created the BMW 5 Series Gran Turismo. The perfect solution for individuals who want the prestige of a luxury Saloon, the practicality of an Estate vehicle and the versatility and spaciousness of a modern day SAV, this vehicle can adapt to all personal and lifestyle demands. A modern interpretation of an iconic GT, long-distance driving and relaxed cruising are at the heart of the Gran Turismo together with the ability to tailor the driving experience to the exact demands of the driver – whether that be refined cruising or a more sporty, enthusiastic drive. What is for certain however, as with all BMWs, an engaging and rewarding drive is part of its core.





ISN'T THE PURPOSE OF EVERY JOURNEY TO DISCOVER SOMETHING NEW?

Beneath the Coupé-like roofline of the BMW 5 Series Gran Turismo, exists a host of innovations to discover. Beyond the luxuriously appointed passenger compartment and interior versatility, a superior level of standard equipment underpins each model including BMW's eight-speed automatic transmission boasting performance and efficiency improvements, luxurious Dakota leather upholstery, Bluetooth telephone preparation, a panoramic glass sunroof for enhanced interior light and spaciousness and a four-zone air conditioning system for individually controlled climate zones. These standard innovations, to name only a few, further underline the refined and luxurious driving experience of the Gran Turismo for all passengers. For total personalisation, a multitude of options and packages can be selected to further tailor the Gran Turismo to your own bespoke requirements.

ANTICIPATE THE FIRST DRIVE.

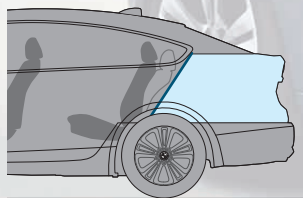




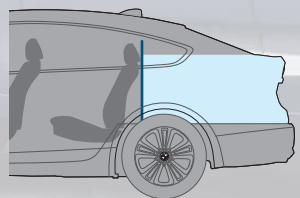
DYNAMICALLY VERSATILE.



Every day, a vehicle needs to satisfy a diverse range of demands. The BMW 5 Series Gran Turismo handles every challenge with surprising versatility. Beneath the rakish roofline, there is a superior level of practicality to be discovered. Providing flexible luggage capacity by means of a dual opening tailgate, the Gran Turismo's versatility is endlessly accommodating. Everyday items can be loaded quickly and comfortably via the smaller boot lid beneath the rear window, also ensuring passengers are protected from the exterior elements.



With the rear seats adjusted for maximum legroom, the luggage compartment capacity is 440 litres.

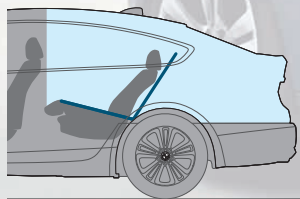


Capacity expands to 590 litres with the luggage compartment partition wall in the vertical position.

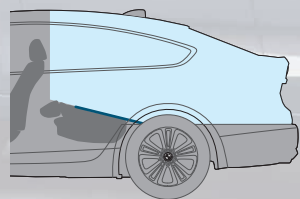




For those occasions when the transportation of more sizeable items is required, the larger tailgate can be utilised providing access to a luggage compartment capacity of 1,700 litres – comparable to a modern SAV. The unique and cleverly executed independent partition wall, neatly dividing the passenger compartment and the luggage area, adds a degree of further flexibility together with the luggage compartment cover which can be removed and cleverly stowed beneath the luggage compartment floor.



The rear backrests and partition wall feature a 40:20:40 configuration for total flexibility.



The maximum storage space of 1,700 litres is achieved by completely folding down the rear seat backrests and the dividing partition wall.





DISCOVER A VEHICLE DRIVEN BY IDEAS AND INNOVATIONS.

BMW EFFICIENT DYNAMICS – GIVES MUCH MORE THAN IT TAKES.

BMW was one of the first manufacturers to pursue the goal of efficient driving technologies, as a part of our multiple award-winning sustainability strategy. BMW EfficientDynamics represents the most comprehensive package of innovative technologies for reducing fuel consumption and emissions – while simultaneously increasing driving dynamics – that is currently in standard production. With it, BMW has been able to reduce the CO₂ emissions of its entire fleet by approximately 30% since 1995. 31 models produce less than 140g of CO₂ per kilometre, and BMW has already rolled out more than two million vehicles equipped with EfficientDynamics. BMW intends to achieve a further 25% reduction by 2020.

BMW EfficientDynamics – Takes so little, yet gives so much.

Through tireless research, BMW is producing innovations for the energy efficient mobility of the future. The BMW 5 Series Gran Turismo, like every BMW, comes with the comprehensive, multi-award-winning technology package BMW EfficientDynamics as standard. BMW EfficientDynamics technologies interact perfectly to reduce fuel consumption and CO₂ emissions while maximising performance and dynamism. Less fuel, more driving pleasure – a seeming paradox that BMW has resolved once and for all. For the benefit of the environment and the enjoyment of the driver.

Vision becomes reality: BMW Vision EfficientDynamics.

In 2014 BMW plans to present a 2+2 sports car that will feature ground-breaking plug-in-hybrid technology combining sports-car performance with small-car consumption. This will highlight BMW's position as the world's leading manufacturer of exceptionally sporty yet incomparably efficient vehicles. The BMW Vision EfficientDynamics test model has a latest-generation fully hybrid system producing 328hp (241kW). A three-cylinder turbo diesel engine (120kW, 290Nm torque) combines with a hybrid synchronous engine on the front axle (225Nm) and a fully hybrid drive system on the rear axle (210Nm), giving the vehicle a range of up to 435 miles. This sports car's dynamism to fuel consumption ratio is without equal.

➤ www.bmw.co.uk/EfficientDynamics

BMW EFFICIENT DYNAMICS TECHNOLOGY HIGHLIGHTS ON THE BMW 5 SERIES GRAN TURISMO.



High-precision direct injection.

In this cutting-edge generation of petrol direct injection, the Piezo injectors are positioned very close to the spark plugs. They inject the fuel at high pressure and with extreme precision. The injectors' central positioning means only part of the combustion chamber needs to be filled with an ignitable petrol-air mixture, thus improving fuel consumption.

Brake Energy Regeneration.

The alternator disengages automatically when the battery is fully charged, only re-engaging when the battery needs charging. This reduces the demands on the engine, reducing fuel consumption and emissions. In addition, when the car is braking or coasting, the system automatically engages the alternator to charge the battery, recycling energy that would otherwise be wasted.

Lightweight Engineering.

Lightweight materials have been introduced across the BMW range to create lighter engines and bodywork. The new materials reduce drag, making the car more responsive and improve handling for a more involved drive. And of course, the lighter the car the less fuel used and the lower the CO₂ emissions.

Active Aerodynamics.

An engine needs more fuel when starting from cold. So to help ensure every trip is as fuel efficient as possible, Active Aerodynamics automatically closes the air vents to help the engine reach its operating temperature faster. This also helps improve aerodynamics, reducing air resistance cutting fuel consumption even further. The vents are only opened again to allow air to flow through the engine when cooling is required.

Eight-speed automatic transmission.

The close spacing of gear ratios in the eight-speed automatic transmission with Steptronic, enables maximum use of the optimum rev range, lowering fuel consumption and enhancing shift comfort.

Individual BMW EfficientDynamics technologies may be excluded depending on the model and optional equipment chosen. Your BMW Dealer will be pleased to provide you with more information.

BMW EfficientDynamics
Less emissions. More driving pleasure.



The BMW 535d GT:
Fuel consumption of 42.2mpg
and 0 to 62mph in 6.1 seconds.

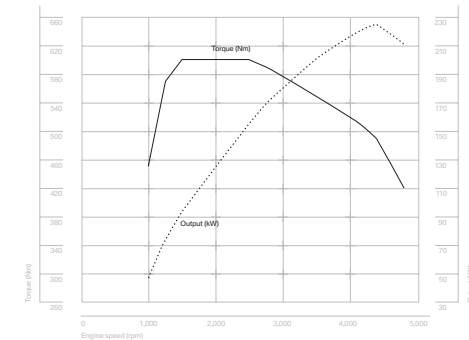
BMW EfficientDynamics
Less emissions. More driving pleasure.

GRAN TURISMO POWER

The BMW 5 Series Gran Turismo is equipped with an impressive choice of engines to take you effortlessly and efficiently on even the longest of journeys – in true GT tradition.

Pioneering diesel technology powers the **BMW 530d GT**. With an average fuel consumption of 43.5mpg* and an output of 245hp (180kW), the six-cylinder engine is outstandingly efficient. Maximum torque of 540Nm allows for effortless overtaking and turbocharger technology with variable turbine geometry sees the car sprint from 0 to 62mph in 6.9 seconds.

Sporty performance and outstanding efficiency are the hallmarks of the new **BMW 535d GT**. Underlying its impressive performance is the Twin-turbo engine, delivering peak torque of 600Nm at 1,750rpm, with a power output of 299hp (220kW). With BMW EfficientDynamics, the six-cylinder in-line engine accelerates from 0 to 62mph in just 6.1 seconds, yet delivers 42.2mpg* on the combined cycle.



With six cylinders and a Twin-turbo, the engine in the BMW 535d GT develops impressive torque and power. Along with smooth and quiet running in any rev range, it guarantees absolute comfort and control, together with outstanding efficiency.

The **BMW 535i GT** is powered by a six-cylinder in-line petrol unit with VALVETRONIC. This package of innovations enables a significant reduction of fuel consumption as well as impressive performance figures: 306hp (225kW), a maximum torque of 400Nm at the extremely low engine speed of just 1,200rpm, and powerful acceleration from 0 to 62mph in just 6.3 seconds.

The **BMW 550i GT** features the range-topping V8. Two parallel turbochargers serve up maximum torque of 600Nm between 1,750rpm and 4,500rpm, guaranteeing impressive power at all engine speeds. The high-precision direct injection, 407hp (300kW) V8 accelerates the BMW 5 Series Gran Turismo from 0 to 62mph in a phenomenal 5.5 seconds.

When it comes to fuel efficiency, driving performance and smooth running, this outstanding power transmission delivers the winning numbers. The **eight-speed automatic transmission** comes as standard and ensures an optimal engine speed at all times. Just the thing for sporty acceleration or efficient and comfortable low-speed cruising – and everything inbetween.

* For information on fuel consumption and CO₂ emissions please refer to pages 62/63.

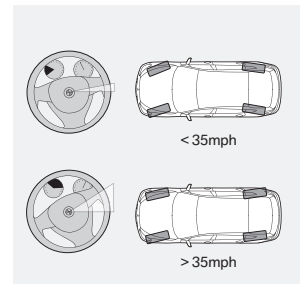


THE ONLY SENSATION YOU'LL GET FROM THE ROAD: DRIVING PLEASURE.

In the development of suspension and steering, BMW engineers pursue two seemingly contradictory goals: on the one hand, passengers should be protected from uneven road surfaces, but on the other hand, the driver must be able to feel direct contact with the road. It is this delicate balance that produces the unparalleled BMW driving sensation. Comfort and dynamics should never be mutually exclusive. Which is why we've been using the same proven design conventions for decades, such as the rear-wheel-drive and weight distribution of almost 50:50. In the BMW 5 Series Gran Turismo these typical BMW principles are combined with cutting-edge control systems and sophisticated suspension: The double-wishbone suspension reduces longitudinal and lateral forces at the front axle and simultaneously optimises contact with the road. In addition, the rear axle is fitted with self-levelling air suspension as standard. This automatically regulates the ground clearance and spring deflection, thereby guaranteeing passenger comfort, safety and agility – whatever the load.

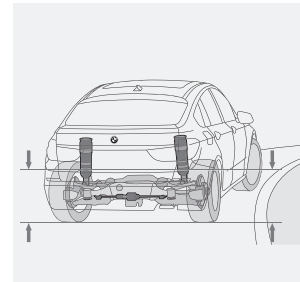
Integral Active Steering.

This system brings together the benefits of Active Steering and rear-wheel steering. Active Steering offers a variable steering ratio on the front wheels to ensure outstanding manoeuvrability and agility. At low speeds, the rear-wheel steering is able to turn in the opposite direction to the front wheels to significantly reduce the vehicle's turning circle, while at higher speeds the rear wheels steer almost imperceptibly in the same direction to help enhance vehicle stability and improve ride comfort.



Adaptive Drive.

This option combines active suspension control systems, Dynamic Drive and Variable Damper Control (VDC). The body roll through corners is minimised, allowing the driver to steer the BMW 5 Series Gran Turismo with unrivalled precision and agility. Key to this innovation are active antiroll bars on the front and rear axles. Minimising body roll also results in noticeable improvements in ride comfort.



Drive Dynamic Control.

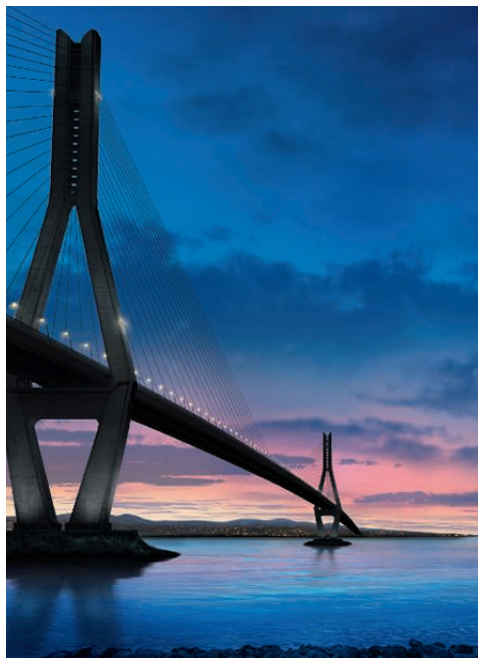
Standard on all models, the characteristics of the BMW 5 Series Gran Turismo can be adjusted to any personal requirements at the touch of a button. Throttle response, transmission mapping and the level of steering assistance can be adjusted with three individual settings: Normal, Sport and Sport+. With the optional Adaptive Drive system, the suspension settings can also be personalised with a Comfort mode.



BMW CONNECTED DRIVE: INTELLIGENT NETWORKING OF DRIVER, CAR AND ENVIRONMENT.

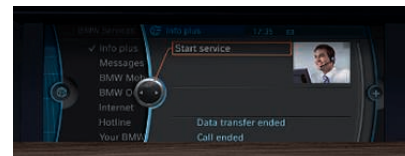
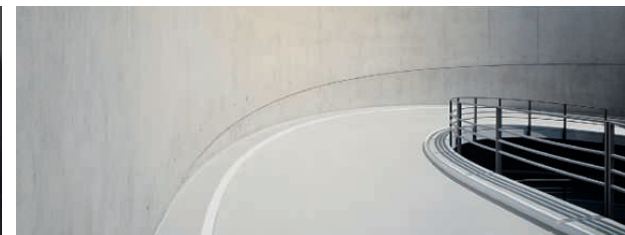
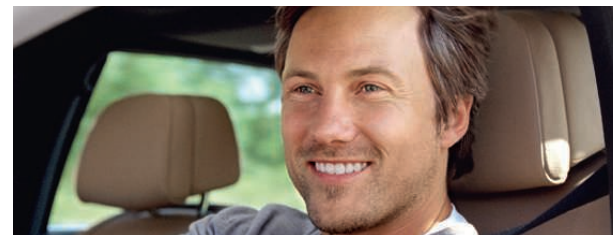
The IT revolution has changed the way we live. For BMW drivers, it has become normal to view their vehicle as another networked component of their lives – they expect to be able to access information on the go, communicate with others, and keep up

with the latest news. The term BMW ConnectedDrive therefore comprises all packages and innovative technologies that enable BMW vehicles and their occupants to connect with the outside world.



BMW ConnectedDrive
In touch with your world.

Convenience.



BMW Assist Information Plus.

At the push of a button local information is available wherever you may be in the country, using Information Plus. The service connects you to an operator who will be able to quickly access the information you need. You can request places of interest from hotels and restaurants, to museums or historical attractions. The information is then sent to your car and can then be used in your navigation system to plan a route to your destination, or to make a call on your Bluetooth telephone. Information Plus is part of the optional BMW Assist package.

My BMW Remote App.

Available for iPhone users, the new app can be downloaded free of charge via iTunes from the App Store. The app features Vehicle Finder - when the vehicle ignition is off and the car is within a radius of 1,500 metres of the iPhone, the vehicle location can be displayed in the app. It also features Remote Door Unlock and Remote Headlight Flash allowing these functions to be controlled by the user with an iPhone. The My BMW Remote App is available to iPhone users who have a compatible iPhone and the optional BMW Assist package.

Surround-view, side-view and rear-view cameras.

Surround-view offers the driver a bird's-eye-view of the area around the vehicle, shown in the Control Display. The rear-view camera provides a view of the area to the rear of the car. In addition, side-view cameras ensure better visibility when joining a main road from a side street or junction.

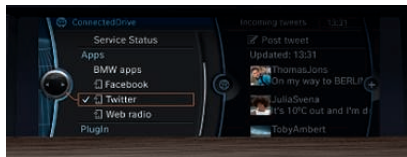
Speed limit display.

Keeps the driver informed of the maximum permissible speed of the road being travelled. A camera 'reads' relevant signs above and beside the road, and compares the information with the speed limits recorded in the Navigation system. The speed limit is then displayed in the instrument cluster and the optional Head-up Display.

Infotainment.

**Bluetooth telephone preparation.**

From now on, you can use the time you spend in your car even more effectively. Thanks to the Bluetooth telephone preparation and the intelligent integration of selected compatible business mobile phones¹, Office functions such as dates, tasks, contacts or SMS messages can be shown on the Control Display, via the Bluetooth connection, or they can be read aloud via the audio speakers, using the narrator function (if the vehicle is also equipped with Voice Control). Thanks to Bluetooth Audio Streaming², wireless playback of music files via selected compatible Bluetooth devices¹ is no problem either.

**Mobile application preparation.**

For the first time, preparation for iPhone applications are integrated into the vehicle Control Display in combination with a compatible iPhone. With this optional feature, users can download the free BMW Connected iPhone application. Using the iDrive system, you can select web radio stations from around the world and call up the latest status reports from your Facebook or Twitter accounts on the Control Display. With this option, audio playback from the iPhone is controlled from the vehicle Control Display using the iPhone user interface. And that's just the beginning, more functions and apps will follow in the future.

**USB audio interface.**

In conjunction with an optional navigation system, the USB audio interface and an original iPod USB cable, the album cover art for the track being played can be shown on the Control Display in the car (the cover art display function is also available for other devices). The USB audio interface also allows the connectivity software in your BMW to be easily updated, so new compatible mobile phones and music players become fully operational after updating with a USB memory stick.³

**BMW Online.**

This portal gives you a range of current localised information inside your vehicle. The portal features news and weather. You can also access a search engine based on the Google Maps database. BMW Online is part of the optional BMW Assist package.

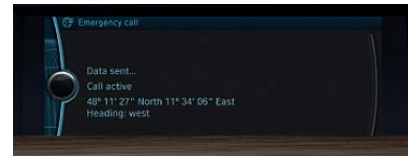
Safety.

**Night Vision with pedestrian recognition.**

An infrared camera in the front grille detects people and animals up to a distance of 300 metres. The camera images are shown in the Control Display. Pedestrian recognition also gives a visual warning to indicate any people moving close to the road, enabling the driver to recognise potential dangers sooner and take more timely action.

**Head-up Display.**

Important driving information such as current speed is projected onto the windscreen in the driver's direct field of vision. Direction arrows from the navigation system, cruise control functions and Check Control data can also be displayed.

**Emergency 999 SOS call.**

Summon help manually by pressing the emergency call button activating a 999 call that links to an Emergency Service Centre, so you can explain the situation and arrange for assistance. An automatic Emergency SOS call gives extra reassurance that if you cannot call for help, the vehicle will. In extreme situations the crash or airbag sensor will automatically activate an Emergency 999 SOS call. With both the manual and automatic Emergency SOS call, details of your vehicle and location will be sent directly to a 999 Emergency Service Centre, so that immediate action can be taken and assistance dispatched without delay. The Emergency 999 SOS call is part of the optional BMW Assist package.

¹ See www.bmw.com/bluetooth for information on compatible devices.

² Details of compatible phones enabled for Bluetooth Audio Streaming is available at www.bmw.com/bluetooth

■ Standard equipment □ Optional equipment

The following pages show the colours and materials available for the BMW 5 Series Gran Turismo. You can use them to identify your favourite colours, or compare various possible combinations. These colour samples are designed to give you

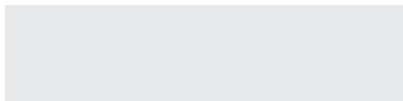
a first impression. Experience has shown however, that the printed versions of paint and upholstery colours cannot in all cases faithfully replicate the precise shade of the paintwork and upholstery. We therefore recommend that you consult

your BMW Dealer on your preferred colour choices. They will be happy to show you larger samples and assist you with your choices.

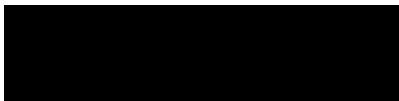
🔗 www.bmw.co.uk/5SeriesGranTurismo

Exterior colours

□ 300 Alpine White, non-metallic



□ 668 Jet Black, non-metallic



■ 475 Black Sapphire, metallic



■ 354 Titanium Silver, metallic



■ A52 Space Grey, metallic



■ A92 Orion Silver, metallic



■ A76 Deep Sea Blue, metallic



■ A85 Neptune Blue, metallic



■ B03 Damask Red, metallic



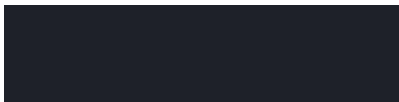
■ A84 Milano Beige, metallic



■ A89 Imperial Blue, metallic



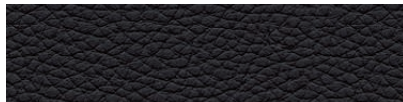
■ A90 Sophisto Grey, metallic



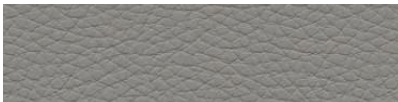
¹ Only available in combination with option 456, Comfort seats, front.

Upholstery colours

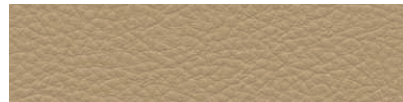
■ **LCSW Black**, Dakota leather



■ **LCDE Everest Grey**, Dakota leather



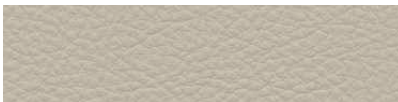
■ **LCDF Venetian Beige**, Dakota leather



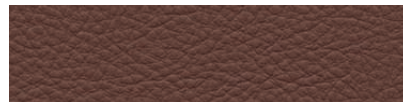
■ **LCEW Ivory White/Black**, Dakota leather



■ **LCEX Ivory White/Ivory**, Dakota leather



■ **LCEZ Cinnamon Brown/Black**, Dakota leather



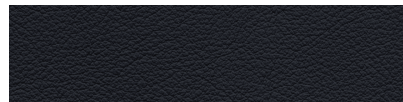
□ **NAEW Ivory White/Black**, Exclusive Nappa leather¹



□ **NAEZ Cinnamon Brown/Black**, Exclusive Nappa leather¹



□ **NASW Black**, Exclusive Nappa leather¹



■ Standard equipment □ Optional equipment

Interior colours

Black



Everest Grey



Venetian Beige

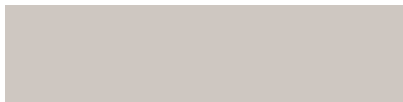


Ivory White



Interior trims

■ 4CG Satin Silver



□ 4B5 Light Ash-grain wood, high-gloss



□ 4BN Dark Ash-grain wood, high-gloss²



□ 4CA Anthracite Ash-grain wood, high-gloss



□ 4CB Finline natural finish wood, un-lacquered



Combinations

Interior colours	Dakota leather ¹						Exclusive Nappa leather		
Standard seats	●	●	●	●	●	●	—	—	—
Sport seats	●	●	●	●	●	●	—	—	—
Comfort seats	●	●	●	●	●	●	●	●	●
Upholstery colours	Black	Everest Grey	Venetian Beige	Ivory White	Ivory White	Cinnamon Brown	Ivory White	Cinnamon Brown	Black
Interior colours	Black	Everest Grey	Venetian Beige	Black	Ivory White	Black	Black	Black	Black
Exterior colours									
Non-metallic 300 Alpine White	●	●	●	●	●	●	●	●	●
Non-metallic 668 Jet Black	●	●	●	●	●	●	●	●	●
Metallic 475 Black Sapphire	●	●	●	●	●	●	●	●	●
Metallic 354 Titanium Silver	●	●	●	●	●	●	●	●	●
Metallic A52 Space Grey	●	●	●	●	●	●	●	●	●
Metallic A92 Orion Silver	●	●	●	●	●	●	●	●	●
Metallic A76 Deep Sea Blue	●	●	●	●	●	●	●	●	●
Metallic A85 Neptune Blue	●	●	●	●	●	●	●	●	●
Metallic B03 Damask Red	●	●	●	●	●	●	●	●	●
Metallic A84 Milano Beige	●	●	●	●	●	●	●	●	●
Xrallie A89 Imperial Blue	●	●	●	●	●	●	●	●	●
Xrallie A90 Sophisto Grey	●	●	●	●	●	●	●	●	●
Interior trims									
4CG Satin Silver	●	●	●	●	●	●	●	●	●
4B5 Light Ash-grain wood, high-gloss	●	●	●	●	●	●	●	●	●
4BN Dark Ash-grain wood, high-gloss ²	●	●	●	●	●	●	●	●	●
4CA Anthracite Ash-grain wood, high-gloss	●	●	●	●	●	●	●	●	●
4CB Fine-line natural finish wood, un-lacquered	●	●	●	●	●	●	●	●	●
<p>The above table shows all available exterior and upholstery colour combinations. For more information on how your preferred combinations will appear, please refer to the "Build your BMW" section of the www.bmw.co.uk website, or consult your local BMW Dealer.</p> <p>¹ Dakota leather includes seat surfaces, armrests in centre console and doors, head rests for front seats and outside rear seats, gear lever and handbrake gaiters.</p> <p>² Standard on 550i GT.</p>									

— Not available ● Available



SPORTING ELEGANCE.

The Black Sapphire metallic paintwork emphasises the exclusive elegance of the BMW 5 Series Gran Turismo and is powerfully complimented by 19" light alloy Y-spoke style 315 wheels. Inside, Cinnamon Brown Dakota leather upholstery is in perfect harmony with the Dark Ash-grain wood interior trim.

The BMW 5 Series Gran Turismo exudes modernity with its discreet Orion Silver metallic paintwork – set off by 19" light alloy Multi-spoke style 235 wheels. This sense of lightness continues seamlessly into the interior. The Ivory White Dakota leather upholstery together with the Anthracite Ash-grain wood trim create an atmosphere of unparalleled luxury.

**EFFORTLESSLY
STYLISH.**



■ Standard equipment □ Optional equipment



□ **522 Xenon headlights** for high and low beam, includes automatic headlight range control and headlight washing system, provide significantly improved illumination of the road ahead at night, in bad weather and when visibility is poor. Included in option ZGA, Visibility package.

□ **524 Adaptive Headlights** with variable light distribution. The integrated cornering lights are activated whenever the indicator is switched on, or automatically according to the steering angle. Included in option ZGA, Visibility package.

□ **5AC High-beam Assistant** helps the driver at night by automatically switching between high or low beam according to the oncoming traffic, vehicles driving in front and the quality of road lighting. Included in option ZGA, Visibility package.



■ **402 Panoramic glass sunroof** with generous dimensions for maximum interior light, featuring a speed-dependent wind deflector. The front glass section can be raised electronically or fully opened via sliding function. Includes sliding roof liner, comfort closing and anti-trap functions.



□ **322 Comfort Access system** to lock and unlock the vehicle without direct operation of the remote control key. Includes Chrome door handle inserts.

□ **323 Soft-close doors** for the gentle closing of all four doors via electric function. Electric motor completes the final 6mm of closing.



Tailpipes: The 530d GT features a distinct twin Chrome tailpipe, fitted on the left.



Tailpipes: The 550i GT features two individual quadrilateral Chrome tailpipes, one left and one right.



Tailpipes: The 535i GT and 535d GT models feature two individual Chrome tailpipes, left and right.



□ **2SR 18" light alloy Double-spoke style 234**
8 J x 18 with 245/50 R18 run-flat tyres
(standard on 535i GT, 530d GT and 535d GT).



□ **2AF 18" light alloy Turbine-spoke style 271**
8 J x 18 with 245/50 R18 run-flat tyres.



□ **2SW 19" light alloy Star-spoke style 272**
with mixed tyres, 8.5 J x 19 wheels and 245/45
R19 run-flat tyres at the front, 9.5 J x 19 wheels
and 275/40 R19 run-flat tyres at the rear
(standard on 550i GT).



□ **2ST 19" light alloy Multi-spoke style 235**
with mixed tyres, 8.5 J x 19 wheels and 245/45
R19 run-flat tyres at the front, 9.5 J x 19 wheels
and 275/40 R19 run-flat tyres at the rear.



□ **2LG 19" light alloy Y-spoke style 315**
with mixed tyres, 8.5 J x 19 wheels and 245/45
R19 run-flat tyres at the front, 9.5 J x 19 wheels
and 275/40 R19 run-flat tyres at the rear.



□ **2BX 20" light alloy Double-spoke style 253**
with mixed tyres, 8.5 J x 20 wheels and 245/40
R20 run-flat tyres at the front, 10 J x 20 wheels
and 275/35 R20 run-flat tyres at the rear.



□ **2B2 20" light alloy Double-spoke style 316**
with mixed tyres, 8.5 J x 20 wheels and 245/40
R20 run-flat tyres at the front, 10 J x 20 wheels
and 275/35 R20 run-flat tyres at the rear.

■ Standard equipment □ Optional equipment



■ **Multi-function leather steering wheel** allows the driver to operate a large number of functions conveniently and without being distracted from the road ahead. The left-hand buttons are used to operate all Cruise control functions, while those on the right serve the audio functions, such as the radio, telephone and Voice Control.



□ **255 Sport multi-function leather steering wheel** sits comfortably in the driver's hands thanks to its small diameter and firmer, sportier grip. The integrated buttons allow convenient and safe operation of the telephone, voice and audio functions, as well as Cruise control.

□ **248 Steering wheel heating:** The rim heats up quickly at the touch of a button – especially pleasant in winter.



■ **Eight-speed automatic transmission** with electronic gear selection and Adaptive Transmission Management enable fast and comfortable gear shifting – for maximum driving dynamics and efficiency.

■ **Drive Dynamic Control** enables the driver to select one of three modes from Normal to Sport+. In conjunction with Adaptive Drive, a Comfort mode is also available. The most appropriate configuration to suit individual requirements can be selected.



□ **4U1 Ceramic surround for controls**, including the iDrive controller, loudspeaker system controls and gear selector lends the interior a uniquely contemporary finish and maintains a comfortable temperature even in direct sunlight.



■ **Black panel technology** shows the displays in the instrument cluster as a Matt Black surface when the ignition is switched off. Only the Chrome rings of the circular instruments (open at the bottom) are visible in 3D. When the doors are opened, the Chrome rings join at the bottom and the dials and displays are shown. Then, when the ignition is switched on, the trip computer and Check Control information light up.



■ **Automatic air conditioning with four-zone control:** The climate of both the front and rear compartments can be controlled separately allowing the driver and three passengers to tailor the temperature to their individual preferences.



□ **610 Head-Up Display** delivers driving related information such as the car's speed, directly into the driver's field of vision. The arrow instructions of the navigation system, and functions of the Active Cruise Control with 'Stop and Go' function, Lane departure warning system, Speed limit display* and Check Control data can also be displayed.



□ **8TH Speed limit display*** uses a camera to read both permanent and temporary speed limit signs and displays the current speed limit in the Info Display and optional Head-up Display (only in conjunction with BMW Professional Multimedia Navigation system).

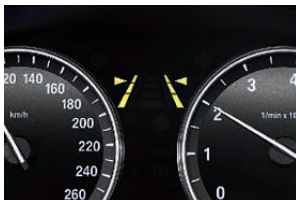


□ **5DF Active Cruise Control with 'Stop and Go' function.** Enhances comfort and active safety in stop-and-go traffic. The system keeps track of the gap of the vehicle ahead and automatically maintains an appropriate distance, achieving standstill if necessary. Once the lane ahead becomes free, the system accelerates again up to the desired speed.



□ **609 BMW Professional Multimedia Navigation system** with high-resolution 10.2" colour display, includes DVD drive, integrated hard disc for storage of audio files transferred from CDs, MP3 players or USB sticks, as well as dynamic route planning, 3D route map and split-screen function.

□ **606 BMW Business Advanced Navigation system** with 7.0" colour display, including CD drive, dynamic route planning, 2D and perspective route map and/or arrow view.



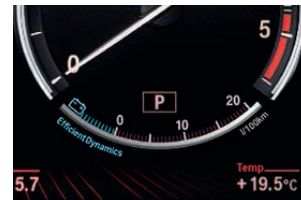
□ **5AD Lane departure warning system** uses a camera to identify when the vehicle is nearing a road marking and warns the driver by sending a mild vibration through the steering wheel if the indicator is not activated.



□ **5AG Lane change warning system:** When the indicator is switched on to signal the intention to change lanes, this system recognises a vehicle in the driver's blind spot or a vehicle approaching at high speed in the overtaking lane and warns the driver by sending a mild vibration through the steering wheel as well as through a visible signal in the exterior mirror casing.



□ **3AG Reversing Assist camera** shows the area behind the vehicle in the Control Display. □ **5DL Surround view** includes Top-view and Side-view cameras. Top-view consists of two video cameras which provide a "bird's-eye view" of the area to the side of the car. Side-view consists of two video cameras, one at each side of the front bumper and permits an early view of approaching traffic when exiting junctions with restricted visibility.



■ **BMW EfficientDynamics display:** As soon as the driver brakes or stops accelerating, the kinetic energy made available is transformed by Brake Energy Regeneration into electrical energy and fed into the battery. This charging process is indicated by a symbol in the rev counter (in combination with full black panel technology).

* Please note that Speed limit display is an aid to driver memory only, it is not possible to guarantee system recognition of all permanent and temporary speed limit signs. It remains the responsibility of the driver to recognise speed limits, operate within existing road laws and drive in a manner appropriate to weather and traffic conditions.



□ **6UK Night Vision with pedestrian recognition** uses an infra red camera to detect people and animals up to a distance of 300 metres and transfers the images directly onto the Control Display. The pedestrian recognition system (operable at distances of up to 100 metres) sends a warning signal to the driver if a person moves towards the road and will present a hazard.



In combination with **Night Vision** with pedestrian recognition, a thermal imaging camera is integrated into the twin kidney grilles. The sides of the kidney grille slats are Black.



□ **6NF Telephone USB audio interface** includes an additional connection point for the playback of music from a mobile phone with a built in music player. For further information on compatible handsets and the availability of the cradle which will need to be purchased separately, please consult www.bmw.co.uk/bluetooth.

□ **6NR Mobile application preparation.** Preparation for iPhone applications in combination with a compatible iPhone. Users can download the free BMW Connected iPhone app, which supports Facebook and Twitter, also features web radio.



□ **6FL USB audio interface** with extended functions. In conjunction with the original Apple iPod™ USB cable, the album cover for the current song can be shown in the Control Display. This "Cover Art" display adds the cover for each song and album – for fast and convenient reference (this function is also available for other devices).



□ **6FH Rear seat entertainment BMW Professional** includes two separate tiltable 9.2" colour screens, DVD drive; provides access to the vehicle's entertainment systems and navigation whilst driving; remote controlled, connections for MP3 players, game consoles and includes two sets of headphones.

□ **6FG Rear seat entertainment BMW Business** includes two tiltable 8.0" colour screens and a DVD drive; remote controlled, connections for MP3 players, game consoles and includes two sets of headphones.



□ **601 TV function** allows the Control Display to be used as a television when the car is stationary. The TV function receives terrestrial analogue and digital programmes - DVB-T.



□ **676 Business loudspeaker system** with digital amplifier and 12 loudspeakers.

□ **677 Professional loudspeaker system** uses a digital amplifier with 600 watt output and a total of 16 loudspeakers to deliver a sound experience of maximum intensity.

■ **BMW Professional radio**, four channel amplifier, two tuner reception, aerial diversity, scan function, CD player, MP3 playback facility.



■ **Standard seats for driver and front passenger** with electric adjustment of seat height and backrest angle; manual adjustment of fore/aft position and headrest height and angle.

□ **459 Seat adjustment, electric**, with memory function for driver. Includes electrically adjustable steering column and 'kerb-view' function for passenger wing mirror (standard on 550i GT and all Executive models).



□ **456 Comfort seats** for driver and front passenger, individually multi-adjustable electric seats with adjustment for lower and upper sections of backrest, headrest, angle of seat base, thigh support, lumbar support and memory function (standard on all Executive models).

■ **Seat heating** for driver and front passenger seats. Seat surfaces and backrests feature three heating levels. Rear seat heating is standard on all Executive models.



□ **481 Sport seats for driver and front passenger**, have raised side sections to provide optimum side support with part-electric adjustment of seat height, backrest angle and manual adjustment of thigh support. Includes anti-whiplash head restraints (550i GT features full-electric adjustment).



■ **Rear central armrest**, contains two cup holders and a storage compartment.



□ **4UY Ski bag** allows clean and secure transportation of up to four pairs of skis while up to four people are travelling in the car.



■ **Ambient Lighting** illuminates and creates ambience in the cockpit. Includes rear reading and footwell lights and illuminates the storage compartment in the front centre console, all door pockets, the back of the front seats, the sides of the rear centre console and also includes vicinity lighting in the door handles and door sill finishers illumination.



■ Standard equipment □ Optional equipment



□ **453/454 Seat ventilation** ensures a pleasantly cool seat temperature in summer to significantly increase comfort; vents in the seat surfaces and backrests blow air through the perforated upholstery (option 454 only available for Executive models).



Rear seat adjustment controls in luggage compartment: Backrest inclination and seat distance from the luggage compartment can be individually electronically adjusted from the luggage compartment (only available for Executive models).

■ **Executive Models**, featuring two independent rear comfort seats with full electric adjustment of lower and upper sections of backrest, headrest, angle of seat base, thigh support and lumbar support. Fixed rear centre console features a storage compartment and two cup holders.



■ **SE models**, featuring three rear seats with manually adjustable backrests and seat base positions. Adjustable in 40:60 configuration regarding seat base and 40:20:40 for seat backrests.



□ **416 Sunblinds, electric** for the rear side windows regulate direct sunlight in the cabin.



□ **BMW Service Inclusive.** Service costs are another area where your BMW Dealer can offer you an intelligent solution. With BMW Service Inclusive, routine maintenance services will be provided at no extra cost to you, for the agreed duration or mileage. Find out more at www.bmw.co.uk/serviceinclusive

EQUIPPED WITH ALL THE BEST IDEAS. GENUINE BMW ACCESSORIES.



Rear carrier, lockable; 21" Star-spoke style 311 Chrome wheels.

We don't have to tell you how to travel in style, but we can tell you how to make it even more pleasurable: with Genuine BMW Accessories. Combining outstanding ideas, fascinating design and exemplary functionality to create innovative solutions, Genuine BMW Accessories provide a wide range of equipment for exterior, interior, mobile communication, versatility, safety and security, car care and lifestyle. For instance, the 21" Star-spoke style 311 Chrome wheels, which

adds powerful and commanding emphasis to the appearance of the BMW 5 Series Gran Turismo. Genuine BMW Accessories are amongst many options available that will enhance your vehicle and make it more personal. For further information or a brochure, contact your local BMW Dealer.

www.bmw.co.uk/accessories



Sunblinds, fast and easy mounting on the rear window and rear side windows.



Infrared stereo headphones, designed to optimally integrate with the optional DVD system in the rear.



Reversible luggage compartment mat

530d SE	
Engine	Catalytic converter
	Common-rail injection system
	Diesel Particulate Filter (DPF)
	Digital Diesel Electronics (DDE)
	Engine mounts, hydraulically controlled
	EU5 emissions management
	Oil sensor for level and grade
	Six-cylinder in-line diesel engine with common-rail technology
Transmission	Turbo
	Eight-speed automatic transmission
Wheels and chassis	18" light alloy Double-spoke style 234 with run-flat tyres
	Brake callipers – Aluminium, front and rear
	Disc brakes – front and rear, ventilated
	Double-wishbone front axle, Aluminium
	Dynamic Drive Control – Normal, Sport, Sport+
	Electro-mechanical parking brake with auto-hold function
	Integral rear axle, Aluminium
	Self-levelling air suspension, rear
Servotronic power steering	
Safety and technology	Airbags comprising:
	– Advanced Head Protection System (AHPS II), front and rear
	– Crash sensor activating central locking release, hazard warning lights, fuel cut-off, interior lighting and safety battery terminal
	– Driver, front passenger, front and side
	– Impact-dependent airbag system (ID airbags), driver and front passenger
	– Passenger seat airbag deactivation, front
	– Passenger seat occupancy sensor, front
	Alarm system (Thatcham 1) with remote control and engine immobiliser
	Brake Force Display
	Check control warning system
	Child locking system, rear doors
	Condition Based Servicing (CBS)
	Cruise control with brake function
	Deformation zones – front and rear, that can absorb impacts of up to 9.5mph. Bumpers absorb impacts up to 2.5mph without damage
	Dynamic Stability Control Plus (DSC+) comprising:
	– Anti-lock Braking System (ABS)
	– Automatic Stability Control (ASC)
	– Brake drying
	– Brake fade compensation
	– Brake pre-tensioning
	– Cornering Brake Control (CBC)
	– Dynamic Brake Control (DBC)
	– Dynamic Traction Control (DTC)

530d SE	
Safety and technology (cont.)	Dynamic Stability Control Plus (DSC+) comprising:
	– Electronic Brake-force Distribution (EBD)
	– Hill-start assistant
	– Soft-stop
	First Aid kit and warning triangle
	Foglights, front and rear
	Halogen headlights
	Head restraints – front, anti-whiplash
	Headlight range control, electric
	Incorrect fuelling protection system
	Keyless starting of engine ignition
	On-Board Diagnosis (OBD)
	Park Distance Control (PDC), front and rear
	Rain sensor with automatic headlight activation
	Run-flat tyres with Tyre Puncture Warning System (TPWS)
	Seat belts – front, inertia reel with pyrotechnical belt latch tensioner, belt force limiter and belt restrainer
	Seat belts – rear, three with inertia reel
	Side impact protection
	Windscreen washer jets – front and rear, heated
Seats	Child seat ISOFIX attachment, rear
	Dakota leather upholstery
	Five seat arrangement
	Seat heating, front
	Standard seats – front, part-electric adjustment
	Standard seats – rear, manual adjustment
Exterior equipment	All round anti-corrosion system with partial hot galvanising, phosphate treatment and cathodic dip paintwork, preservation of hollow cavities, underfloor protection
	Door handle illumination
	Exhaust tailpipes – twin, Chrome
	Exterior mirrors – folding, automatically dimming, aspheric, heated, with electric adjustment
	Exterior parts in body colour – bumpers, side sills, door handles, exterior mirror housing
	Exterior trim, Chromeline
	Indicator lenses, clear
	Kidney grille, Chrome with Chrome-fronted and black-sided vertical slats
	Metallic paintwork
	Shark-fin aerial
	Tailgate, dual opening with soft-close

530d SE**Interior equipment**

Air conditioning, automatic with four-zone control

Ambient interior lighting

Armrests – front and rear, centre with storage compartments

Battery in luggage compartment with jump start facility in engine bay

Black panel display, full

Courtesy lights, front and rear with soft on/off dimming

Cup holders, front and rear

Door sill finishers with BMW designation, illuminated

Electric windows – front and rear, with open/close fingertip control, anti-trap facility and comfort closing function all round

Floor mats, velour

Fogging sensor, front windscreen

Footwell lights, front and rear

Glove box

Interior trim, Satin Silver

Luggage compartment comprising:

- 12V socket
- Compartment cover, removable (can be stowed under load floor)
- Compartment with electric unlocking via the key's remote control
- Luggage compartment release button in A-pillar
- Securing rings in luggage compartment, four
- Securing straps in luggage compartment, two

Multi-function controls for leather steering wheel

Panoramic glass sunroof

Power sockets, twin 12V in rear of centre console

Power sockets, two 12V, front

Reading lights, front and rear

Rear-view mirror, automatically dimming

Smoker's Package

Start-Stop button

Steering column with manual reach and rake adjustment

Sun visors with illuminated vanity mirrors

Toolkit located in luggage compartment

Windows – heat-insulated, green-tinted all round

Auxiliary input for auxiliary playing devices

Bluetooth telephone preparation

BMW Professional radio with single CD player (with MP3 playback facility)

Control Display – 7" colour display screen

Favourite buttons

iDrive Controller with shortcut buttons

Loudspeaker system with six speakers

Audio and communication

530d SE	
Audio and communication (cont.)	On-Board Computer (OBC) comprising:
	– Average speed
	– Fuel consumption and range
	– Information display – analogue instruments combined with liquid crystal display
	– Journey computer
	– Outside temperature display
	Personal Profile
	USB audio interface

535d SE	
Equipment in addition/replacement to 530d SE	Exhaust tailpipes – single, left and right, Chrome
	Twin-turbo

535i SE	
Equipment in addition/replacement to 530d SE	Digital Motor Electronics (DME)
	Double-VANOS
	Exhaust tailpipes – single, left and right, Chrome
	Six-cylinder in-line petrol engine with high-precision direct injection and VALVETRONIC
	Turbo

550i SE	
Equipment in addition/replacement to 530d SE	19" light alloy Star-spoke style 272 with run-flat tyres
	Dark Ash-grain wood, high-gloss
	Digital Motor Electronics (DME)
	Double-VANOS
	Exhaust tailpipes – single, left and right, Chrome, quadrilateral
	Kidney grille, Chrome with fully Chrome vertical slats
	Standard seats – front, electric adjustment with driver memory
	Steering column with electric reach and rake adjustment, with memory
	Twin-turbo
	V8 engine with high-precision direct injection

Executive Models	
Equipment in addition/replacement to all models	Comfort seats, front and rear
	Four seat arrangement
	Lumbar support, driver and front passenger
	Rear seat adjustment controls in luggage compartment
	Seat adjustment – front and rear electric with memory
	Seat belts – rear, two with inertia reel
	Seat heating, rear
	Securing straps in luggage compartment, one

Weight		535i	550i	530d	535d
Unladen EU¹	kg	2015	2135	2035	2045
Max. permissible	kg	2570	2690	2590	2600
Permitted load	kg	630	630	630	630
Permitted axle load front/rear	kg	1165/1470	1245/1500	1180/1475	1190/1475
Permitted roof load	kg	75	75	75	75
Permitted trailer load, unbraked	kg	750	750	750	750
Permitted trailer load, braked max. 12%	kg	2100	2100	2100	2100
Permitted trailer load, braked max. 8%	kg	2100	2100	2100	2100
Permitted trailer nose weight	kg	100	100	100	100

Engine²		535i	550i	530d	535d
Cylinders/valves		6/4	8/4	6/4	6/4
Capacity	cc	2979	4395	2993	2993
Stroke/bore	mm	89.6/84.0	88.3/89.0	90.0/84.0	90.0/84.0
Output/engine speed	kW/rpm (hp/rpm)	225/5800 (306/5800)	300/5500 (407/5500)	180/4000 (245/4000)	220/4400 (299/4400)
Max. torque/engine speed	Nm/rpm	400/1200–5000	600/1750–4500	540/1750–3000	600/1750–2500
Compression ratio	:1	10.2	10.0	16.5	16.5

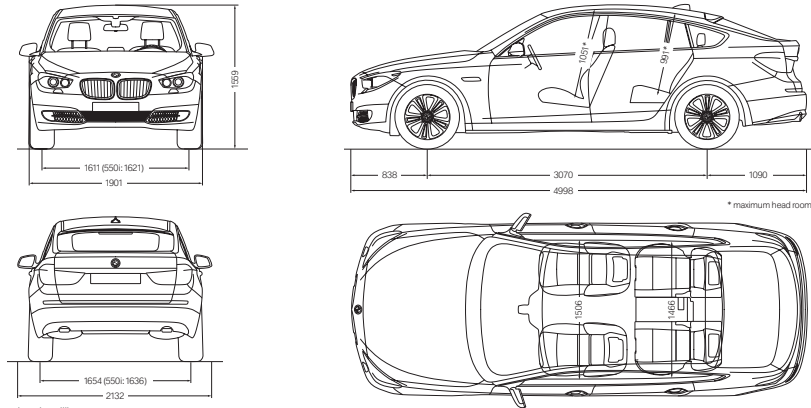
Transmission		535i	550i	530d	535d
Standard transmission ratios	IV/III:1 IV/V/VI:1 VII/VIII/R:1	4.71/3.14/2.11 1.67/1.29/1.00 0.84/0.67/3.30	4.71/3.14/2.11 1.67/1.29/1.00 0.84/0.67/3.32	4.71/3.14/2.11 1.67/1.29/1.00 0.84/0.67/3.32	4.71/3.14/2.11 1.67/1.29/1.00 0.84/0.67/3.32

Performance		535i	550i	530d	535d
Top speed	km/h mph	250* 155*	250* 155*	240 149	250* 155*
Acceleration 0 – 62mph (0 – 100km/h)	sec	6.3	5.5	6.9	6.1

Fuel consumption²,³		535i	550i	530d	535d
Urban	l/100 km mpg	12.3 23.0	16.2 17.4	8.1 34.9	8.3 34.0
Extra-urban	l/100 km mpg	6.9 40.9	8.3 34.0	5.6 50.4	5.8 48.7
Combined	l/100 km mpg	8.9 31.7	11.2 25.2	6.5 43.5	6.7 42.2
CO₂ emissions	g/km	209	263	173	175
Tank capacity, approx.	l	70	70	70	70

Wheels	535i	550i	530d	535d
Tyre dimensions	245/50 R18 Y	245/45 R19 Y/ 275/40 R19 Y	245/50 R18 Y	245/50 R18 Y
Wheel dimensions	8 J x 18	8.5J x 19	8 J x 18	8 J x 18
Material	Light alloy	Light alloy	Light alloy	Light alloy

Electrical system	535i	550i	530d	535d
Battery capacity	Ah 90	90	90	90
Alternator output	A 180	180	180	230
	W 2520	2520	2520	3220



All dimensions in the technical drawings are given in millimetres.

Luggage compartment volumes:

Rear seats all the way back/partition wall locked in 440 litres, rear seats all the way forward/partition wall vertical 590 litres, rear seats and partition wall folded down 1,700 litres.

¹ Figures are based on a 90% tank filling, driver's weight of 68kg and 7kg of luggage. Unladen weight applies to vehicles with standard equipment. Optional extras may increase these figures.

² The petrol engines are designed for RON 98 fuel. They may be run on fuel down to RON 91 with a slight decrease in engine power.

³ All engines conform to the EU6 standard. Fuel consumption is determined according to the ECE combined cycle (l/100km) in which approx. one third of the distance covered is in urban traffic and two thirds is extra-urban. CO₂ emissions are measured in addition to fuel consumption. Consumption figures apply to cars with standard equipment. Optional extras (e.g. wider tyres) may affect consumption significantly.

⁴ Electronically limited.

AN INTRODUCTION TO LONDON 2012.

Why we were selected as the Official Automotive Partner for London 2012.

Our partnership with London 2012 is a natural fit for the business. Our emission lowering technologies, through the EfficientDynamics programme, will play a role in aiming to deliver the most sustainable Games possible. Our range of the world's most fuel efficient premium cars will transport the Olympic Family at the Games – including athletes, officials and the media – and shine a light on the future of mobility with our ground-breaking developments in the next generation of transportation.

The Games time fleet.

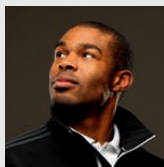
BMW Group's role is incredibly important to the success of the Games. The fleet that will mobilise the Olympic and Paralympic Games will be over 4,000 vehicles strong. A huge undertaking and commitment. Conventional and hybrid vehicles from the range will be used in the vast Olympic Games fleet and BMW Group will showcase electric vehicles as part of our role in London 2012.

We're proud to be a partner.

As a major investor and employer in the UK, our partnership will be an inspiration for our customers, employees and dealers, as we continue to develop market-leading innovations and technologies to shape the future of design, development and driving pleasure.

We are immensely proud of our partnership.

MEET THE BMW LONDON 2012 PERFORMANCE TEAM.



MARTYN BERNARD
High Jump

My parents got me into athletics as a way of channelling my energy, and I haven't looked back. I won my first major medal in 2005 and am now focusing on London 2012, along with studying for my Law degree.



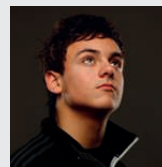
ALISTAIR BROWNLEE
Triathlon

I still remember the thrill of being told I could win medals by my local swimming club. The joy of being outdoors and active led me to my first triathlon when I was 10, and winning the World Junior Championships in 2006 drove me to pursue my Olympic dream. Hopefully I'm on track for London 2012.



JONATHAN BROWNLEE
Triathlon

I started swimming at 4, but when I was 10 my Uncle was in a local triathlon and I couldn't wait to try it too. A month later I took part in my first event. That summer I watched Cathy Freeman race to victory in Sydney 2000 – and I can still remember every second.



TOM DALEY
Diving

I started diving by chance when I was 7, and began competing just before my 9th birthday. There have been lots of highlights since then, including winning the World Championships when I was 15 and picking up two gold medals at the 2010 Commonwealth Games Delhi.



BMW London 2012 Performance Team.

BMW is proud to support Team GB and ParalympicsGB athletes through the BMW London 2012 Performance Team. We want to help the athletes qualify and succeed at the Games. Behind our intelligent technologies lies an understanding that even the smallest change can make a big difference to performance – something that every athlete knows. We'll be working with our London 2012 hopefuls to see how we can actively support them through our world-leading technical expertise. It's going to be an amazing journey.



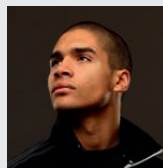
MARK HUNTER
Rowing

I think the turning point in my career was moving to the prestigious Leander Club, which gave me the opportunity to row with the best athletes in the world. I strive to keep improving and, having already won gold in Beijing 2008, a win in London 2012 would be extra special.



ELLIE SIMMONDS
Paralympic Swimming

I was inspired to take up competitive swimming by the Athens Paralympic Games in 2004. After winning two gold medals in Beijing 2008, I became the youngest person to be awarded an MBE, aged 14. Since then, I've been working hard towards London 2012.



LOUIS SMITH
Gymnastics

My first Olympic Games was Beijing 2008, where I won the bronze for the men's pommel horse. That made me the first Briton to win a medal in the individual gymnastics since 1908. Since then I've picked up medals in 2009 and 2010. So hopefully I'm on track for London 2012.



TOM AGGAR
Paralympic Rowing

I started rowing after an accident in 2006 and won my first event at the British indoor championships that year. In 2007 I won gold in a world best time at the World Championships in Munich and I have recently won the International Rowing Federation's first 'Paralympic Rower of the Year' award – my next goal is gold at London 2012.

Condition Based Service. A key feature in most BMW models, Condition Based Service (CBS) signals an innovative leap forward in BMW Service diagnostic technology. The way it works is simple. CBS uses sensors to constantly monitor the areas of your BMW that are subjected to wear and tear. Based on the results of the data, CBS decides the extent to which servicing is necessary. This information is then stored in your vehicle's key. Using a KeyReader, BMW Service staff can download information to provide an accurate analysis of your vehicle. This means your BMW goes for a service only when it needs to, saving you an immeasurable amount of both time and money.

Service Intelligence. BMW Approved Technicians are experts in the use of diagnostic equipment, which quickly identifies if and why the vehicle is running at anything less than peak efficiency. This leads to rapid identification and rectification.

Service Assurance. For additional peace of mind, take comfort in the fact that every new BMW is covered by a three-year warranty² that includes BMW Emergency Service throughout Europe. For more information on BMW Service, please contact your local BMW Dealer, BMW Service Authorised Workshop or visit www.bmw.co.uk/service or www.bmw.ie.

JOY IS BMW SERVICE.



BMW Service Inclusive. Wouldn't it be good to know all your servicing costs in advance? Well, that's exactly what BMW Service Inclusive¹ provides and for a low one-off payment.

BMW Service Inclusive¹ lasts for 5 years or 60,000 miles (whichever occurs first) and covers all your vehicle's servicing requirements. Alternatively you can choose BMW Service Inclusive¹ Plus, which in addition to servicing also covers maintenance items such as brake pads, brake discs and windscreen wipers. And whenever servicing and maintenance work is carried out on your BMW, you can be sure that it will only be done by fully qualified BMW Service Approved Technicians at one of over 150 BMW Service Authorised Workshops around the country. Furthermore, only Genuine BMW Parts are used – each covered by a two year warranty.

BMW Service Inclusive and Service Inclusive Plus are transferable to subsequent owners within the time and mileage period, which can enhance the resale value of your car.²



BMW Assist. BMW Assist provides telematic and online services that are fully integrated with the BMW navigation and Bluetooth telephone systems to offer enhanced services. This provides you and your passengers access to key information from within the vehicle, helping you keep safe and in touch. In the event of an emergency, a 999 SOS call can be triggered manually or in extreme situations automatically. Details of your vehicle and location will be sent directly to a 999 SOS Emergency Service centre so help can be sent without delay. A similar function is also available to connect you to a BMW Service Centre should you require roadside assistance. If you have locked your car, or cannot recall if you have locked your car, with Remote Services the BMW Service Centre can lock or unlock your vehicle remotely.

Information-based services are also included, you can make an Information Plus call to request addresses and telephone numbers are transferred to your vehicle. There is also the facility to send addresses and telephone numbers directly to your vehicle yourself with Google Maps. Using the in-car portal on your vehicle's Control Display you can check the latest news and weather, or access the Google Local Search from where you can look-up business addresses in the car yourself. For vehicles with the BMW Professional Multimedia Navigation system, the Routes service provides a route planning facility from the comfort of home, or access to download a variety of predefined BMW Routes across Europe.

¹ Service Inclusive and Service Inclusive Plus are available as cost options. See price list for details. For further information see the Service Inclusive brochure.

² For further information, please contact your local BMW Dealer.

³ Every new BMW registered within the Republic of Ireland is covered by a two-year manufacturer's warranty – for details, please contact your local BMW Dealer.

BMW Assist services are free of charge for three years on any new BMW 5 Series Gran Turismo equipped with an optional navigation system. Services are not available in the Republic of Ireland, Isle of Man and the Channel Islands. Terms and conditions apply.

SHAPING THE FUTURE – RESPONSIBLY.

The BMW Group has been ranked the most sustainable automotive company worldwide in the Dow Jones Sustainability Index for the sixth time in a row. Sustainability is an integral part of our value chain, encompassing



JOY COMES IN MANY FORMS.



BMW Emergency Service. BMW Emergency Service is the only roadside and assistance programme designed specifically for BMW vehicles offering an exceptional range of benefits and services. It is available 24 hours a day, 7 days a week and utilises a dedicated fleet of BMW Approved Technicians, equipped with Genuine Parts and tools, ensuring that you and your vehicle receive the best possible care in the event of any motoring emergency. This tailor-made programme has been specifically designed to meet the needs of BMW drivers travelling in the UK, Republic of Ireland and Continental Europe giving complete reassurance and peace of mind. Every new BMW is covered for three years.



BMW Financial Services. Chances are you've already decided on the BMW you want to drive. Now discover the perfect finance solution to get you behind the wheel. BMW Financial Services offers a range of tailor-made finance and insurance packages designed to suit you and your budget. And if you opt for insurance from BMW Financial Services, you'll be prepared for all eventualities. For more information, contact your local BMW Dealer. Alternatively visit www.bmwfs.co.uk or call us on 0870 5050 150.

Our comprehensive range of finance and insurance products includes:

- BMW Select (Personal Contract Purchase)
- BMW Hire Purchase
- BMW Contract Hire
- BMW Leasing
- BMW Car Insurance
- BMW Income Protection
- BMW Shortfall



BMW Magazine. Every new BMW customer receives a complimentary subscription to BMW Magazine. This publication features all the latest news and developments from BMW, together with a variety of driving and lifestyle features.

BMW News. To ensure you're one of the first to hear the latest BMW news and developments, BMW UK offer an email programme. Sign-up at www.bmw.co.uk/newsletter.



BMW World, an iconic building in the Munich skyline. The BMW World is a true brand experience where it's possible to marvel at the historic BMWs in the museum, learn about our engineers' newest innovations and take a tour of the plant to experience with your own eyes the cutting-edge and exacting methods used to create a BMW.

every stage from the development of fuel-saving and alternative vehicle concepts to environmentally-friendly production processes and recycling. Our research and development philosophy BMW EfficientDynamics delivers tangible benefits to customers, our climate and the environment. This is reflected in the reduction of CO₂ emissions by nearly 30 % across our European fleet of new cars between 1995 and today. We're also aiming to reduce the amount of resources such as water and energy consumed by our vehicle production by 30%

between 2006 and 2012. Your BMW is part of a comprehensive recycling concept. At the end of its long service life, every single vehicle can be easily and economically recycled. Please contact your BMW Dealer on all matters regarding the return of your end-of-life vehicle. For further information please visit our website.

➤ www.bmw.co.uk/EfficientDynamics
➤ www.bmwgroup.com/sustainability

More about BMW

www.bmw.co.uk
www.bmw.ie



The Ultimate
Driving Machine

The models, equipment and possible vehicle configurations (standard and optional equipment) illustrated in this brochure reflect the specifications of vehicles supplied by BMW AG to the German market. In other EU member states, individual models' equipment content and possible configurations of standard and optional equipment may vary. For precise information on the various country-specific versions available, please contact your local BMW Dealer. Subject to change in design and equipment. Part number 9423 1 110 700.
© BMW AG, Munich/Germany. Not to be reproduced wholly or in part without written permission of BMW AG, Munich.

BMW recommends Castrol



BMW UK on Facebook
www.facebook.com/bmwuk